

Timpani

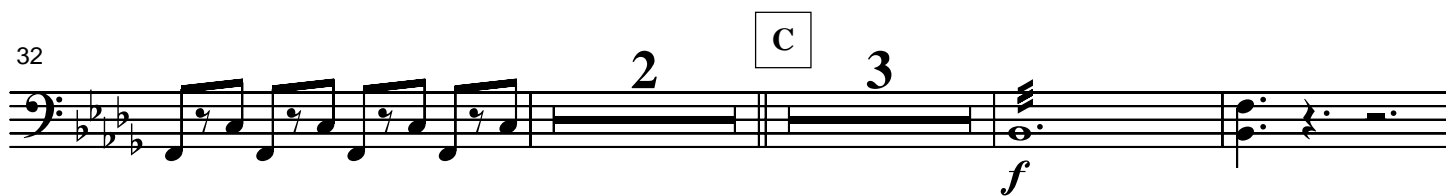
# Procession of the Levites & Anthem of Praise

Darin Atwater  
Richard Smallwood

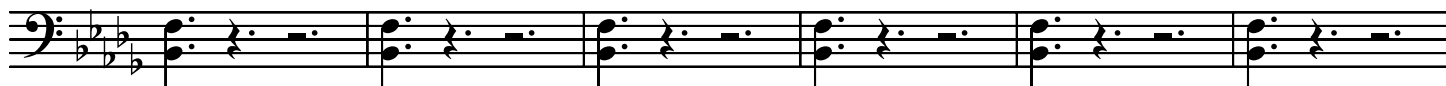
Fast and Intense

The musical score for Timpani consists of six staves of music, all in a key signature of three flats (B-flat, E-flat, A-flat) and a 12/8 time signature. The first staff begins with a *ff* dynamic marking. The second staff includes a measure rest labeled '6', a section marked 'A' with a measure rest labeled '2', and ends with a *ff* dynamic marking. The third staff begins with a measure rest labeled '13'. The fourth staff includes a measure rest labeled '19', a section marked 'B' with a measure rest labeled '3', and begins with a *mf* dynamic marking. The fifth staff begins with a measure rest labeled '26'. The sixth staff begins with a measure rest labeled '29'. The music is characterized by a fast and intense tempo, with a focus on rhythmic patterns and dynamics.

32



40



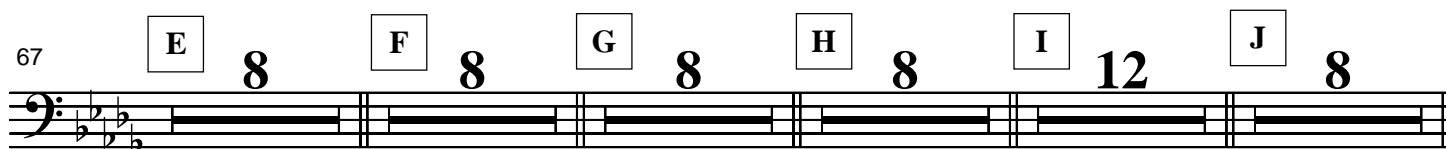
46



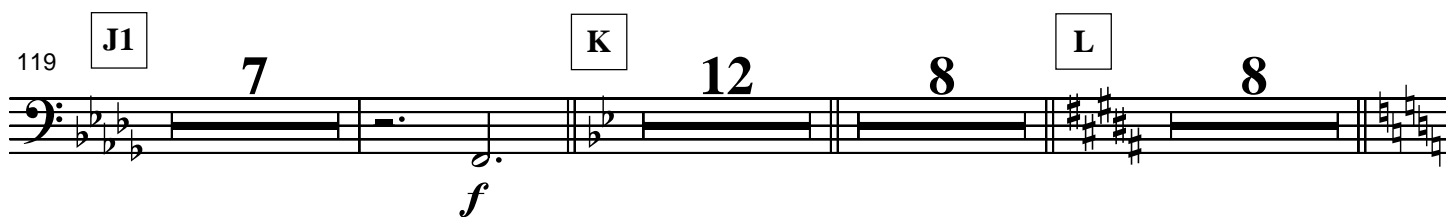
51



67



119



155

